



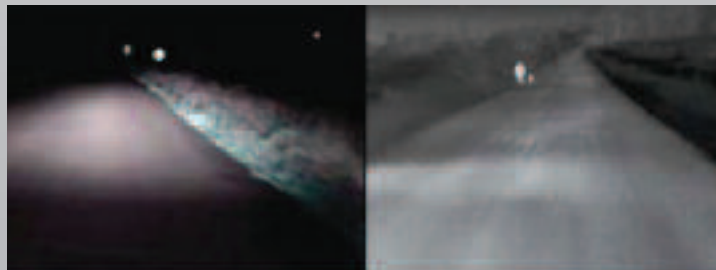
FLIR™ Camera

With over 50,000 units fielded, the PathFindIR is the most reliable and affordable thermal imager available today.



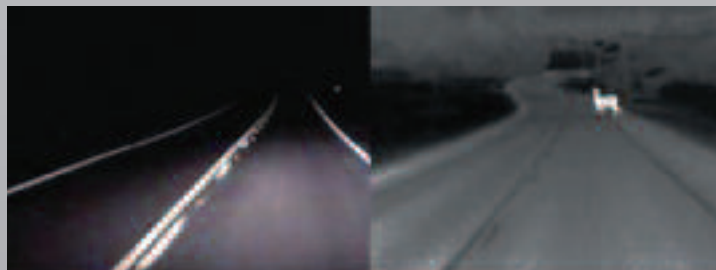
PathFindIR's performance, cost, size and high reliability, makes this nighttime vision camera ideal for a variety of transportation and other driver vision enhancement applications. Drivers of mining, fire rescue, heavy equipment, recreational, commercial and passenger vehicles all benefit from the ability to see more and react sooner to obstacles in their path at night. OEM manufacturers for these industries will benefit from FLIR's expertise involved in the manufacturing of this camera's military grade technology for their commercial clients. PathFindIR is for the OEM manufacturer who wants to incorporate a new innovative low cost, simple to integrate, thermal imaging product with their product offerings. These cameras can be easily incorporated with the Zone Defense™ Systems.

PathFindIR allows a driver to see four times farther than with headlights. Even under the most ideal conditions, drivers only see approximately 450 feet straight ahead and nearly nothing to either side. This camera enables a driver to see pedestrians from over 1000 feet away and vehicles from an even farther distance. Now, you can have the opportunity to have more time to react, plus more distance to stop your vehicle.



Without FLIR

With FLIR



Without FLIR

With FLIR